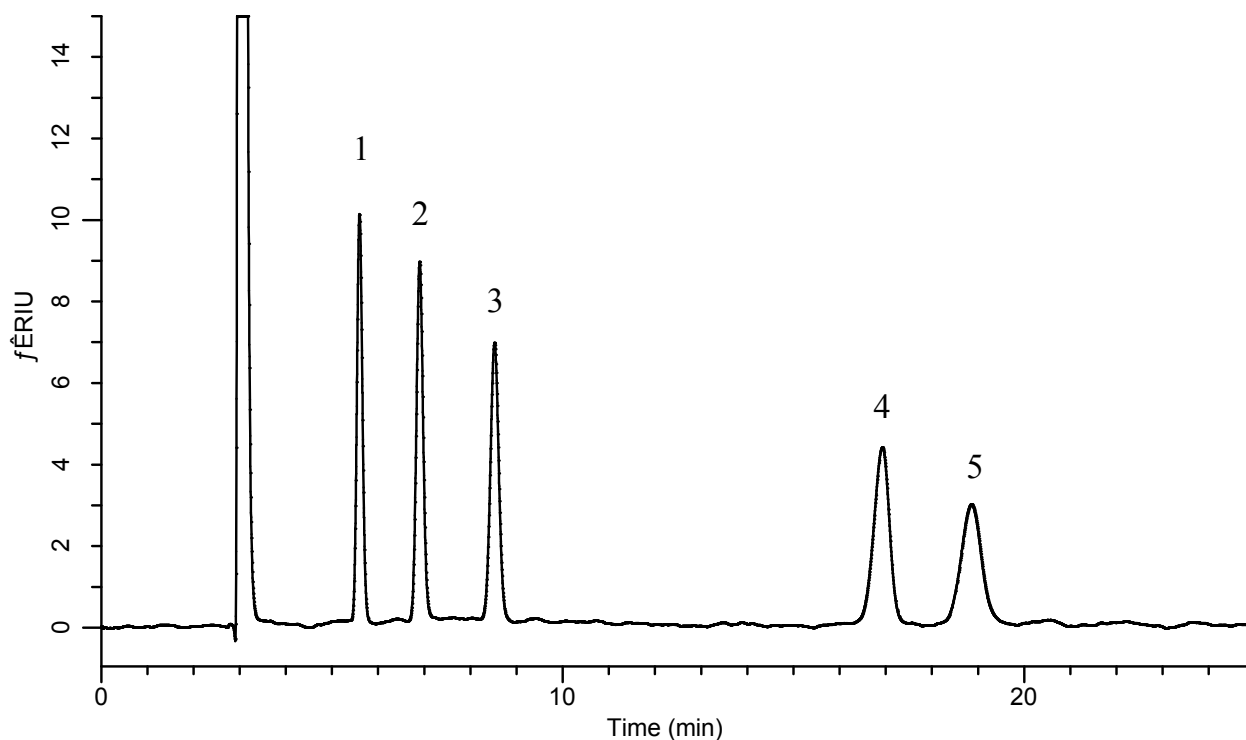


Analysis of Sugar alcohol

Data No. LB537-812



Conditions

System : GL7700 HPLC system
Column : InertSustain Amide
(5 μ m, 250 x 4.6 mm I.D.)
Column Cat. No. : 5020-88632
Eluent : CH₃CN/ H₂O = 80/20, v/v
Flow Rate : 1.0 mL/min
Col. Temp. : 40 °C
Detection : RI (RI7754 RI Detector)
Injection Vol. : 10 μ L
Sample : Standard

Analyte:

1. meso-Erythritol	1.0 mg/mL
2. Xylitol	1.0 mg/mL
3. Sorbitol	1.0 mg/mL
4. Inositol	1.0 mg/mL
5. Lactitol	1.0 mg/mL