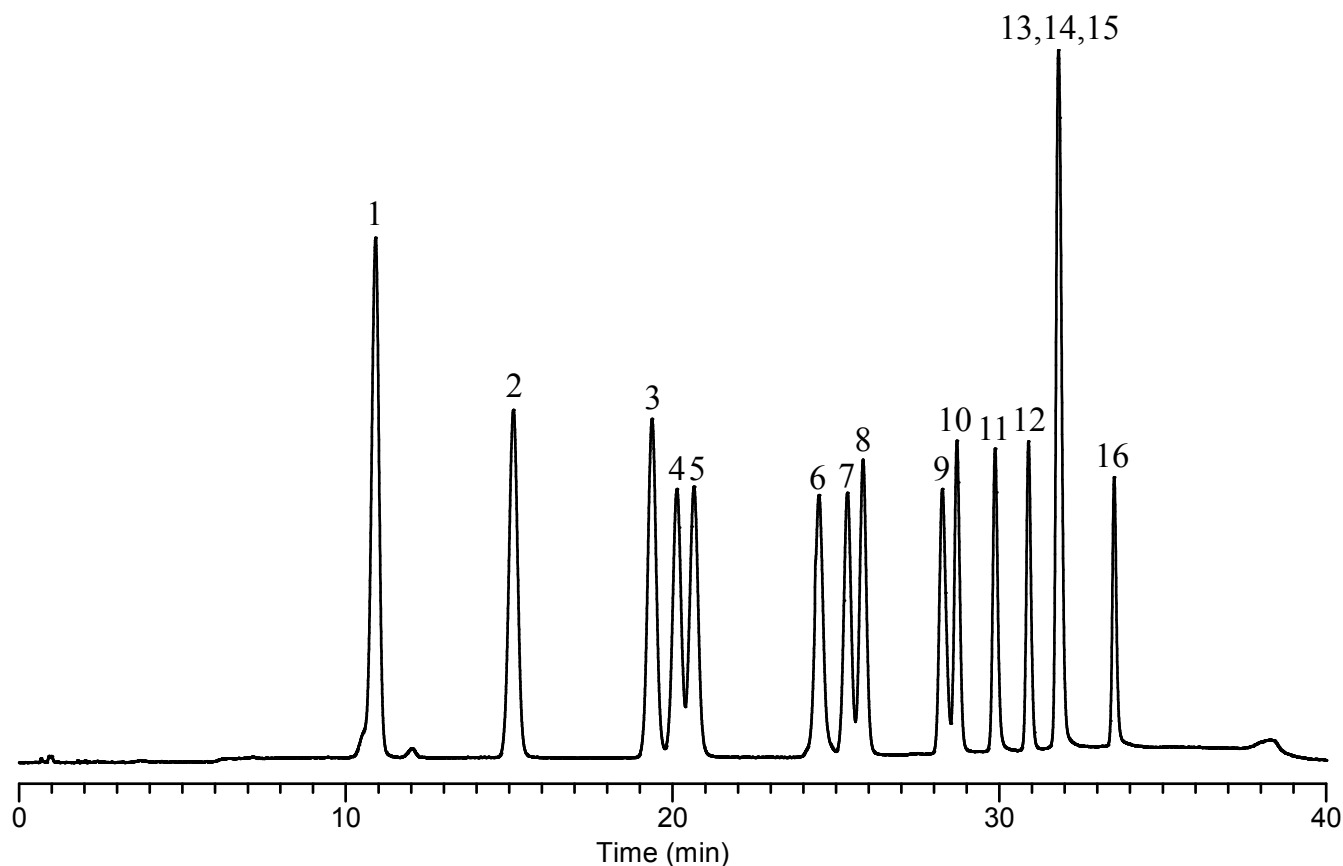


# InertSearch™ for LC

Inertsil™ Applications

## Analysis of 16 kinds of Aldehydes (Detected by Pre-Column Method with DNPH)

Data No. LB558-0848



### Conditions

**System** : GL7700 HPLC system  
**Column** : InertsilSustain PFP HP (3  $\mu$  m, 150 x 4.6 mm I.D.)  
**Column Cat. No.** : 5020-87933  
**Eluent** : A) CH<sub>3</sub>OH/CH<sub>3</sub>CN=9/1, v/v  
          B) H<sub>2</sub>O  
          A/B = 40/60 – 20 min – 53/47  
          – 10 min – 75/25 – 5 min – 75/25  
          – 0.1 min – 40/60, v/v  
**Flow rate** : 1.0 mL/min  
**Col. Temp.** : 40 °C  
**Detection** : UV 360 nm (UV7750 UV Detector)  
**Injection Vol.** : 10  $\mu$  L  
**Sample** : Standard

### Analyte:

1. DNPH-Formaldehyde
  2. DNPH-Acetaldehyde
  3. DNPH-Acetone
  4. DNPH-Acrolein
  5. DNPH-Propionaldehyde
  6. DNPH-Crotonaldehyde
  7. DNPH-*n*-Butyraldehyde
  8. DNPH-Isobutyraldehyde
  9. DNPH-Isovaleraldehyde
  10. DNPH-*n*-Valeraldehyde
  11. DNPH-Benzaldehyde
  12. DNPH-Hexanal
  13. DNPH-*o*-Tolualdehyde
  14. DNPH-*m*-Tolualdehyde
  15. DNPH-*p*-Tolualdehyde
  16. DNPH-2,5-dimethylbenzaldehyde
- Conc. 250  $\mu$ g/L each