

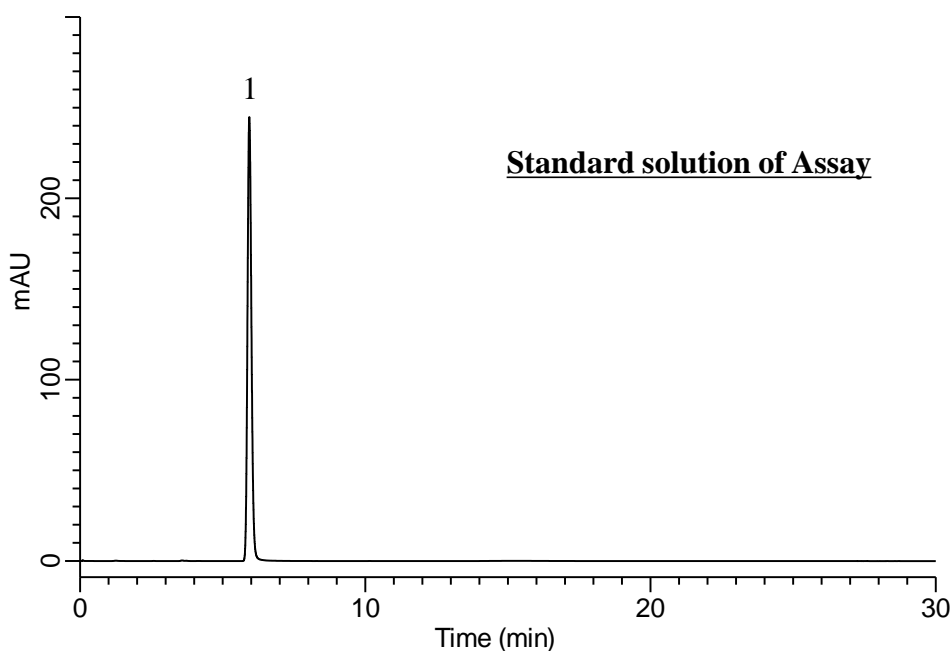
InertSearch for LC

Inertsil Applications

Analysis of Copovidone

(Under the Condition of the draft for the Japanese Pharmacopoeia, (7) 2-Pyrrolidone)

Data No. LB628-0952



Conditions

System : GL7700 HPLC system
Guard Column : Inertsil ODS-3
(5 μ m, 10 x 4.0 mm I.D.)
Column Cat. No. : 5020-19003
Column : Inertsil ODS-3
(5 μ m, 150 x 4.6 mm I.D.)
Column Cat. No. : 5020-01731
Eluent : A) CH₃OH
B) H₂O
A/B = 1/19, v/v
Flow Rate : 0.8 mL/min
Col. Temp. : 40 °C
Detection : UV 205 nm (UV7750 UV Detector)
Injection Vol. : 20 μ L
Sample : Standard

Analyte:

1. 2-Pyrrolidone 45 mg/L

Symmetry factor : 1.17 (\leq 1.5)
RSD of the peak area (%) (n=6)
: 0.60 (\leq 2.0)