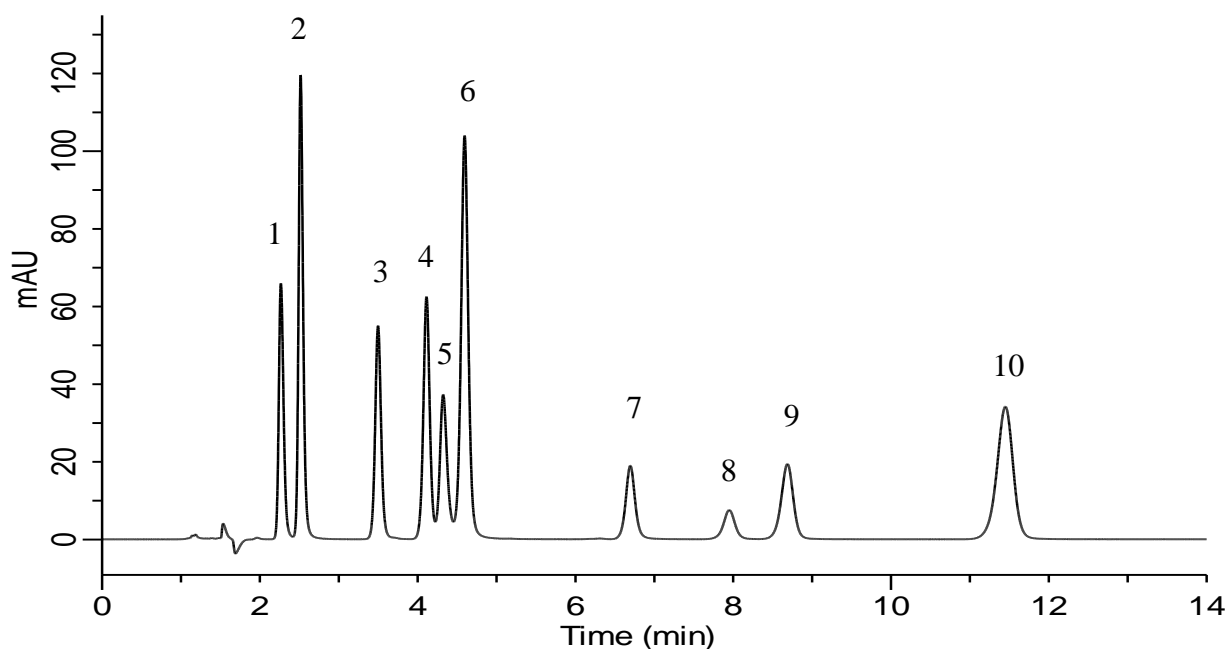


# InertSearch for LC

Inertsil Applications

## Analysis of Nucleotides and Nucleosides

Data No. LB646-0806



### Conditions

**Column** : InertSustain Amide  
(1.9  $\mu$  m, 150 x 2.1 mm I.D.)  
**Column Cat. No.** : 5020-88819  
**Eluent** : A) CH<sub>3</sub>CN  
B) 10 mM HCOONH<sub>4</sub> in H<sub>2</sub>O  
C) HCOOH  
A/B/C = 90/10/0.1, v/v/v  
**Flow rate** : 0.3 mL/min  
**Col. Temp.** : 40 °C  
**Detection** : UV 254 nm  
**Injection Vol.** : 1  $\mu$  L  
**Sample** : Standard

### Analyte:

1. Thymine	100 mg/L
2. Uracil	100 mg/L
3. 5-Methyluridine	250 mg/L
4. Uridine	250 mg/L
5. Adenine	100 mg/L
6. Adenosine	250 mg/L
7. Cytosine	100 mg/L
8. Guanine	100 mg/L
9. Cytidine	250 mg/L
10. Guanosine	250 mg/L