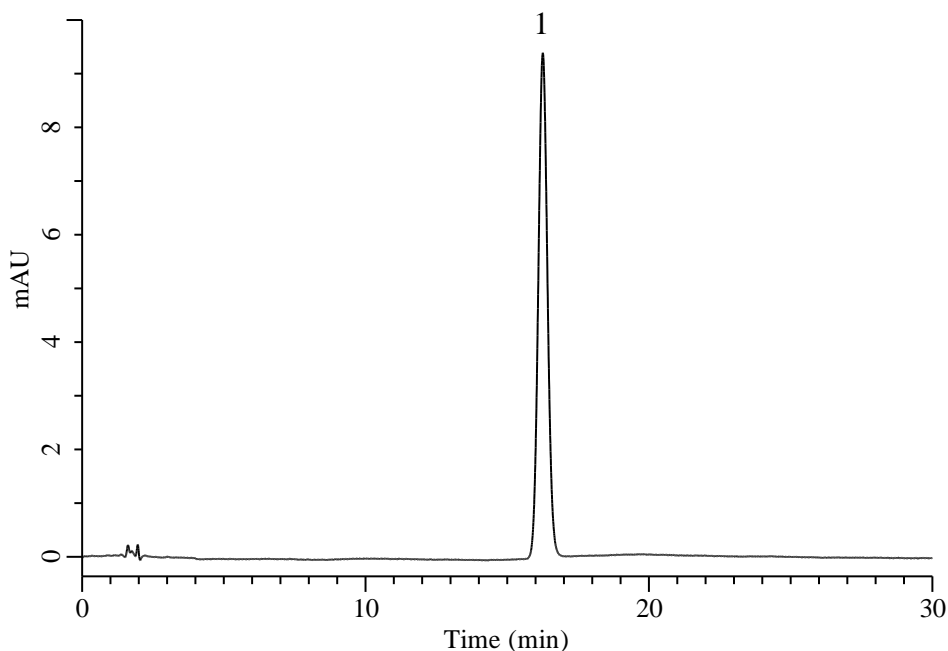


## Analysis of Azoxystrobin

(Under the Condition of food additive analysis method in food)



### Conditions

**System** : Chromaster HPLC system (HITACHI)  
**Column** : InertSustain C18 (GL Sciences Inc.)  
 (5  $\mu$  m, 150 x 4.6 mm I.D.)  
**Column Cat. No.** : 5020-07345  
**Eluent** : A) CH<sub>3</sub>CN  
 B) H<sub>2</sub>O  
 A/B = 9/11, v/v  
**Flow Rate** : 0.8 mL/min  
**Col. Temp.** : 40 °C  
**Detection** : UV 260 nm  
**Injection Vol.** : 10  $\mu$  L  
**Sample** : Standard

### Analyte:

1. Azoxystrobin 10 mg/L