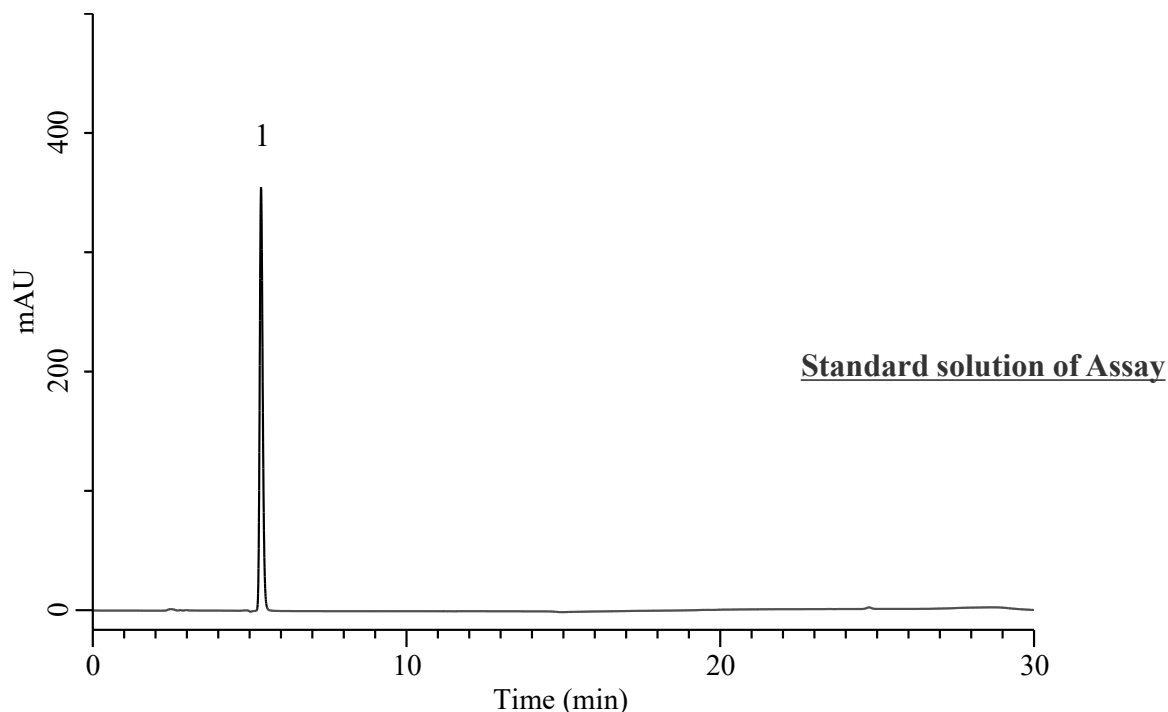


## Analysis of Glacial Acetic Acid

(Under the Condition of the draft for USP, Acetic Acid Otic Solution)



### Conditions

**System** : Primaide HPLC system (HITACHI)  
**Column** : InertSustain AQ-C18 (GL Sciences Inc.)  
 (5  $\mu$  m, 250 x 4.6 mm I.D.)  
**Column Cat. No.** : 5020-89731  
**Eluent** : A) CH<sub>3</sub>CN  
 B) Solution\*

### Analyte:

1. Glacial acetic acid 2 mg/mL

Tailing factor : 1.24 (0.8 - 1.8)

RSD of the peak area (%) (n=6) : 0.10 ( $\leq$  1.0)

Time (min)	A (vol %)	B (vol %)
0	2	98
8	2	98
15	30	70
22	30	70
23	2	98
30	2	98

**Flow Rate** : 1.0 mL/min  
**Col. Temp.** : 40 °C  
**Detection** : UV 215 nm (1430 DAD)  
**Injection Vol.** : 50  $\mu$  L  
**Sample** : Standard

\* : Dissolve 1.36 g of potassium phosphate monobasic in 1000 mL of water. Adjust with 6.9 mL of phosphoric acid diluted with water to 100 mL to a pH of 2.5.