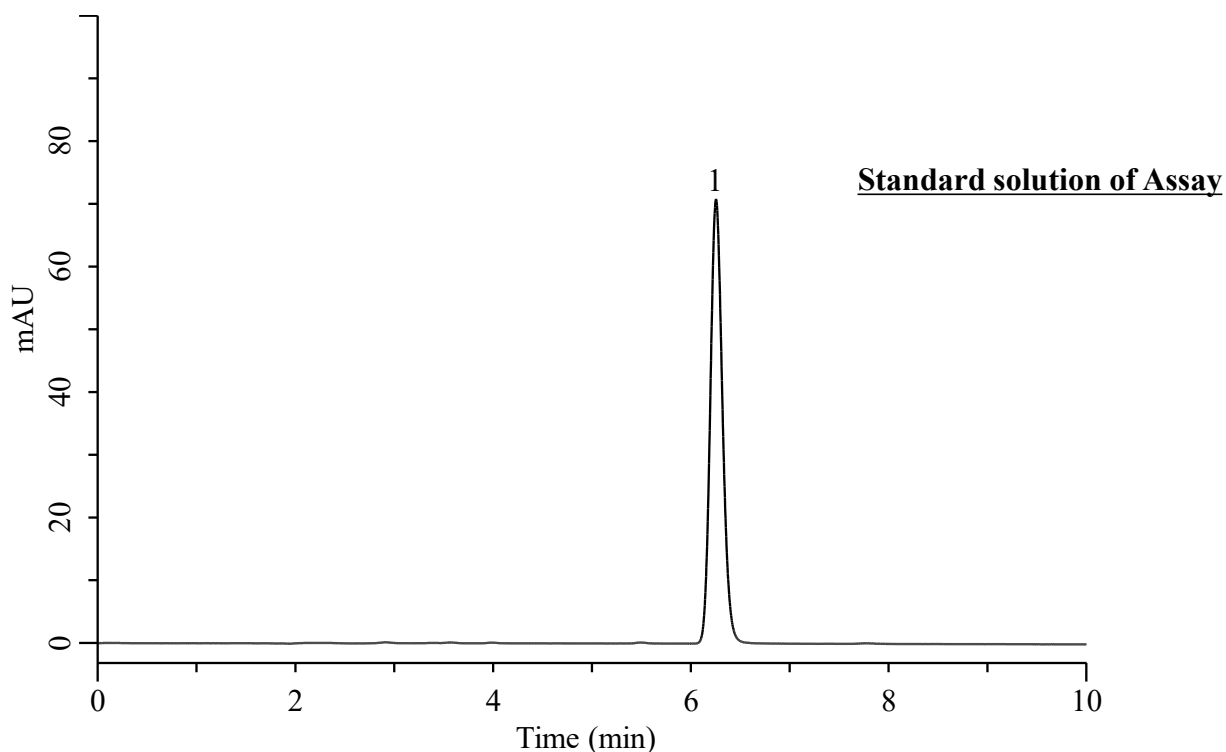


Analysis of Lansoprazole

(Under the Condition of the USP41-NF36, Lansoprazole Compounded Oral Suspension, ASSAY)



Conditions

System : Chromaster PLUS (HITACHI)
Column : InertSustain C18 (GL Sciences Inc.)
 (5 μ m, 250 x 4.6 mm I.D.)
Column Cat. No. : 5020-07346
Eluent : A) CH₃CN
 B) Solution*
 A/B = 45/55, v/v
Flow Rate : 1.0 mL/min
Col. Temp. : 35 °C
Autosampler : 5 °C
Detection : UV 285 nm (Chromaster 5420 UV-VIS)
Injection Vol. : 20 μ L
Sample : Standard

Analyte:

1. Lansoprazole 12 mg/L
 Tailing factor : 1.15 (\leq 2.0)
 RSD of the peak area (%) (n=6) : 0.94 (\leq 2.0)

*: 10 mM sodium phosphate adjusted with sodium hydroxide to a pH of 7.5.