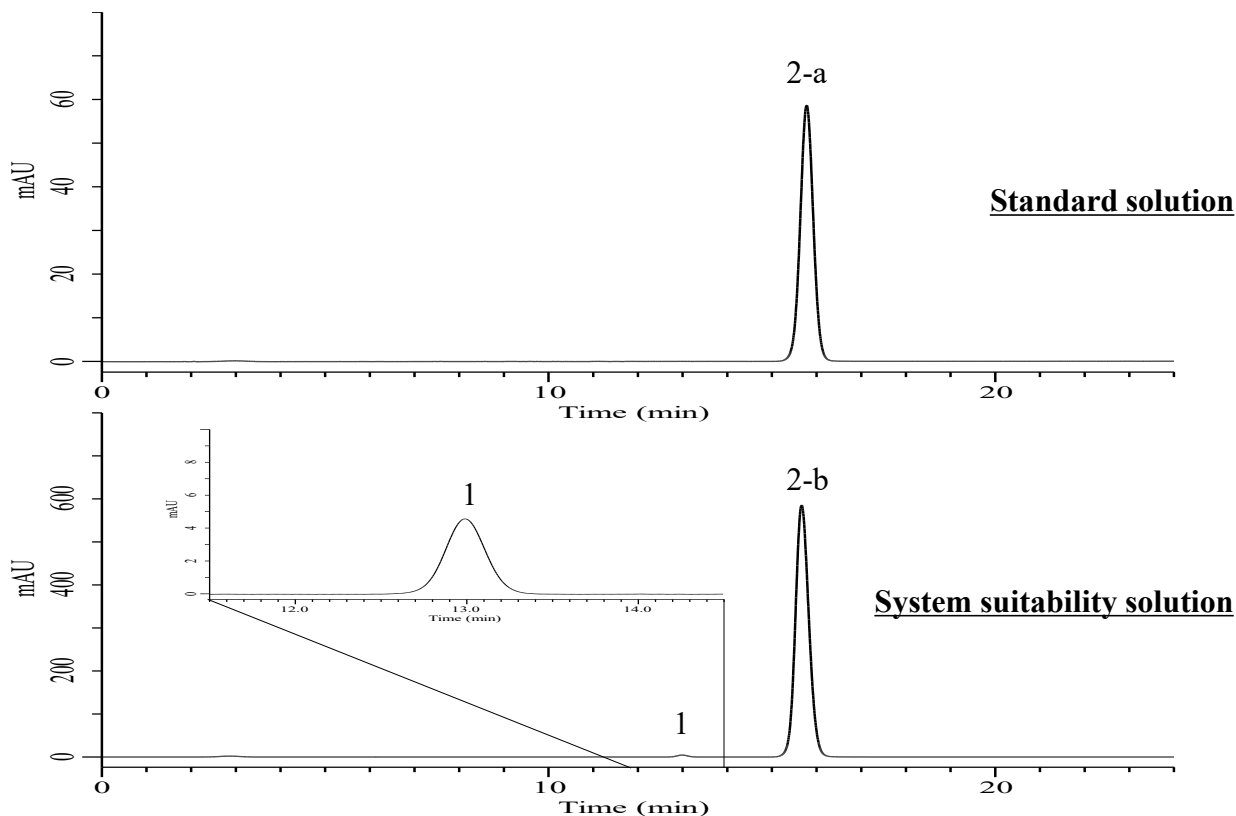


Analysis of Methocarbamol

(Under the Condition of USP43-NF38, Methocarbamol Tablets, ASSAY)



Conditions

System : Primaide (HITACHI)
Column : InertSustain C18 (GL Sciences Inc.)
 (HP 3 μ m, 150 x 4.6 mm I.D.)
Column Cat. No. : 5020-14445
Eluent : A) CH₃OH
 B) Buffer*
 A/B = 30/70, v/v
Flow Rate : 0.8 mL/min
Col. Temp. : 30 °C
Detection : UV 274 nm (Primaide 1435 DAD)
Injection Vol. : 20 μ L
Sample : Standard in Eluent

Analyte:

1. Guaifenesin 0.005 mg/mL
 2-a. Methocarbamol 0.1 mg/mL
 2-b. Methocarbamol 1.0 mg/mL

RSD of the peak area of 2-a (%) (n=6) : 0.14 (≤ 2.0)
 Tailing factor of 2-a : 1.01 (≤ 2.0)
 Resolution (1, 2-b) : 5.35 (≥ 3.5)

*6.8 g/L of monobasic potassium phosphate in water.

Adjust with phosphoric acid or potassium hydroxide to a pH of 4.5.