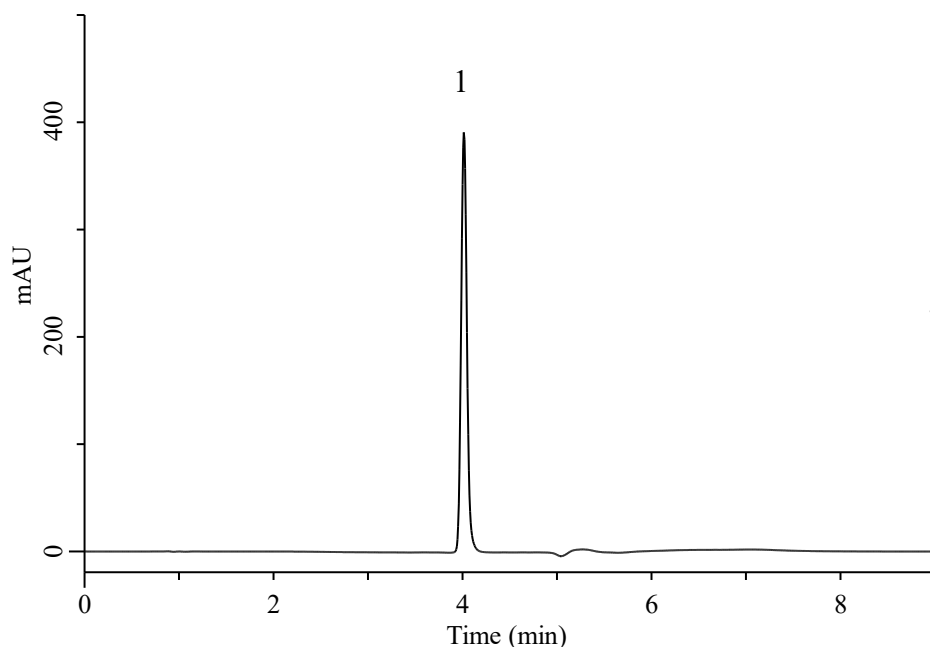


# Analysis of Olaparib

(Under the Condition of draft for USP PF51(6), Olaparib Tablets , DISSOLUTION)



Standard solution

**Conditions**

**System** : Primaide (HITACHI)  
**Column** : InertSustain C18 (GL Sciences Inc.)  
 (3.5 μm, 75 x 4.6 mm I.D.)  
**Column Cat. No.** : 5020-90644  
**Eluent** : A) CH<sub>3</sub>CN/TFA = 1000/1 , v/v  
 B) H<sub>2</sub>O/TFA = 1000/1 , v/v

**Analyte:**

1. Olaparib 0.17 mg/mL

Tailing factor : 1.16 (≦ 1.5)

RSD of the peak area of 1 (%) (n=6) : 0.29 (≦ 2.0)

Time (min)	A (vol %)	B (vol %)
0.0	25	75
3.0	45	55
3.5	100	0
4.0	25	75
9.0	25	75

**Flow Rate** : 1.0 mL/min  
**Col. Temp.** : 40 °C  
**Detection** : UV 276 nm (Primaide 1435 DAD)  
**Injection Vol.** : 10 μL  
**Sample** : Standard in CH<sub>3</sub>CN/H<sub>2</sub>O = 25/75, v/v