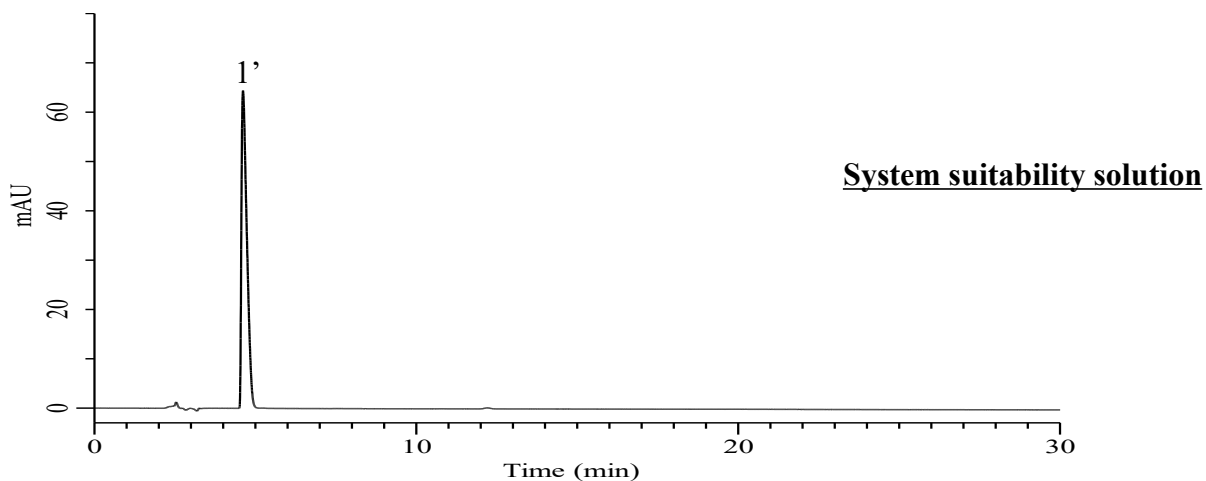
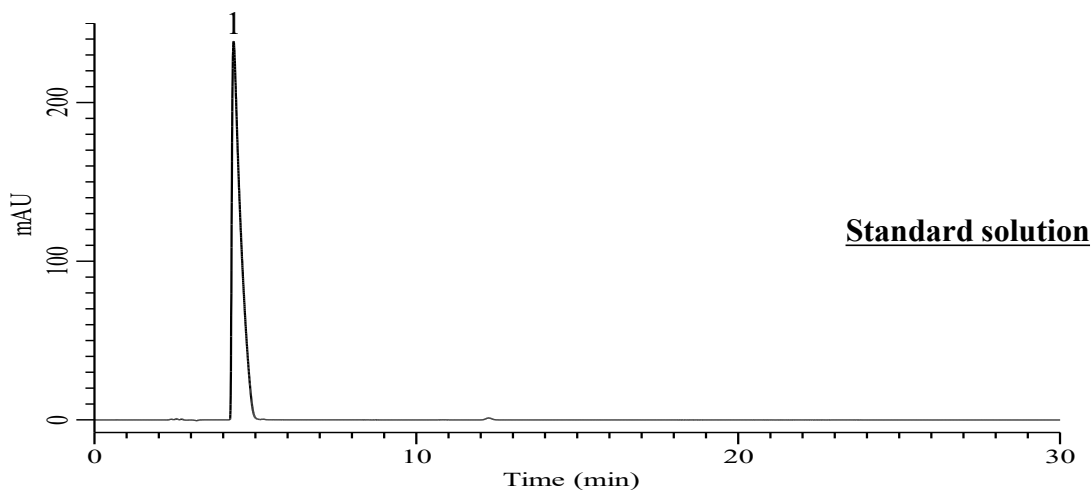


Analysis of Gabapentin

(Under the Condition of the USP43-NF38, Gabapentin, ASSAY)



Conditions

System : Primaide (HITACHI)
Column : Inertsil Hybrid-C18 (GL Sciences Inc.)
 (5 μ m, 250 x 4.6 mm I.D.)
Column Cat. No. : 5020-76017
Eluent : A) CH₃CN
 B) Solution A*
 A/B = 24/76, v/v
Flow Rate : 1.0 mL/min
Col. Temp. : 40 °C
Detection : UV 215 nm (Primaide 1410 UV)
Injection Vol. : 20 μ L
Sample : Standard in Solution B* *

Analyte:

1 . Gabapentin	14.0 mg/mL
1'. Gabapentin	2.3 mg/mL
Tailing factor of 1	: 3.41
Number of theoretical plates of 1'	: 3318 (\geq 1900)
RSD of the peak area of 1 (%) (n=6)	: 0.48 (\leq 0.73)

A*: 0.58 g/L of monobasic ammonium phosphate and 1.83 g/L sodium perchlorate in water.

Adjust with perchloric acid to a pH of 1.8.

B* *: 2.32 g/L of monobasic ammonium phosphate in water. Adjust with phosphoric acid to a pH of 2.0.