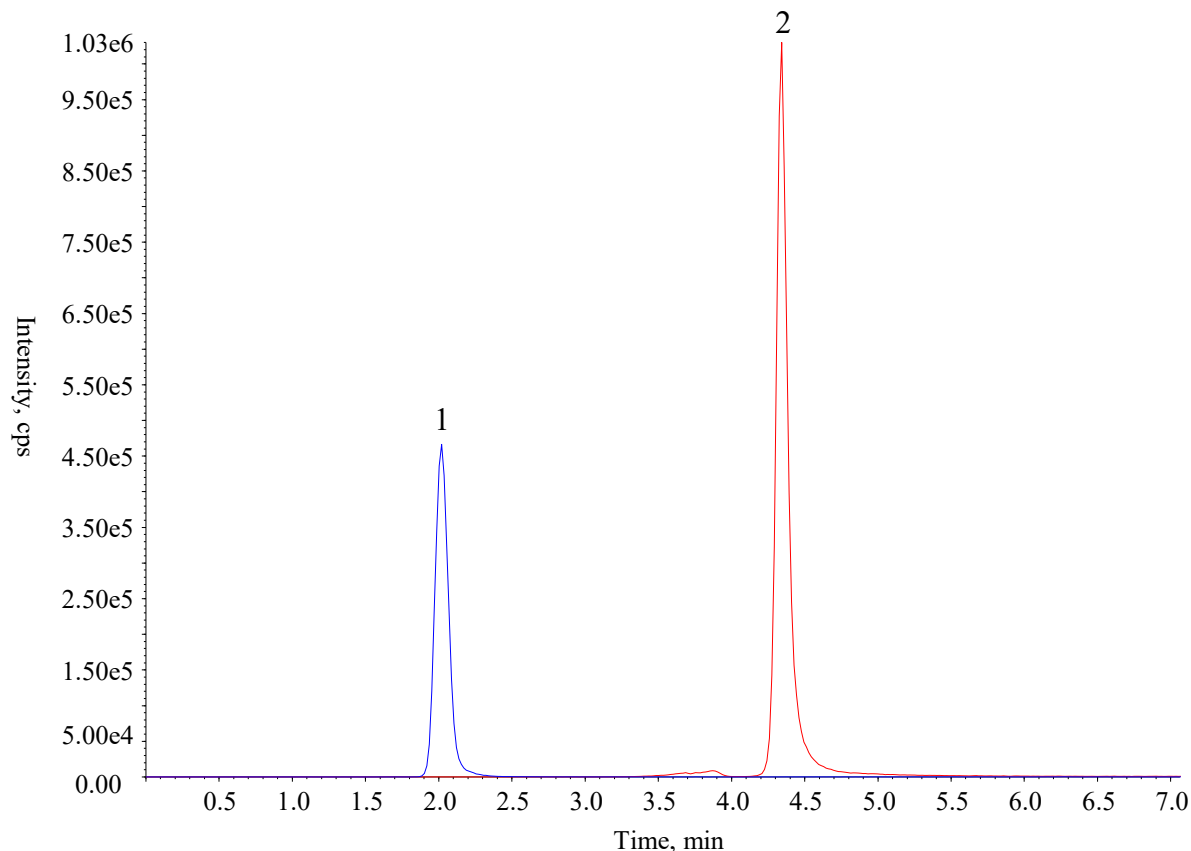


## Analysis of Kasugamycin and Mepiquat chloride



### Conditions

**System** : ExionLC AD (SCIEX) Qtrap 6500+  
**Column** : InertSustain PFP (GL Sciences Inc.)  
 (1.9  $\mu$ m, 100 x 2.1 mm I.D.)  
**Column Cat. No.** : 5020-87942  
**Eluent** : A) CH<sub>3</sub>CN  
 B) 0.1 % HCOOH in H<sub>2</sub>O

### Analyte:

1. Kasugamycin 300  $\mu$ g/L  
 (Q1/Q3 = 380.1/200.0)  
 2. Mepiquat chloride 50  $\mu$ g/L  
 (Q1/Q3 = 114.1/98.1)

Time (min)	A %	B %
0.0	1	99
1.0	1	99
6.0	99	1
6.1	1	99
14.0	1	99

**Flow Rate** : 0.2 mL/min  
**Col. Temp.** : 40 °C  
**Detection** : MS/MS (ESI, Positive)  
**Injection Vol.** : 1  $\mu$ L  
**Sample** : Standard in CH<sub>3</sub>OH