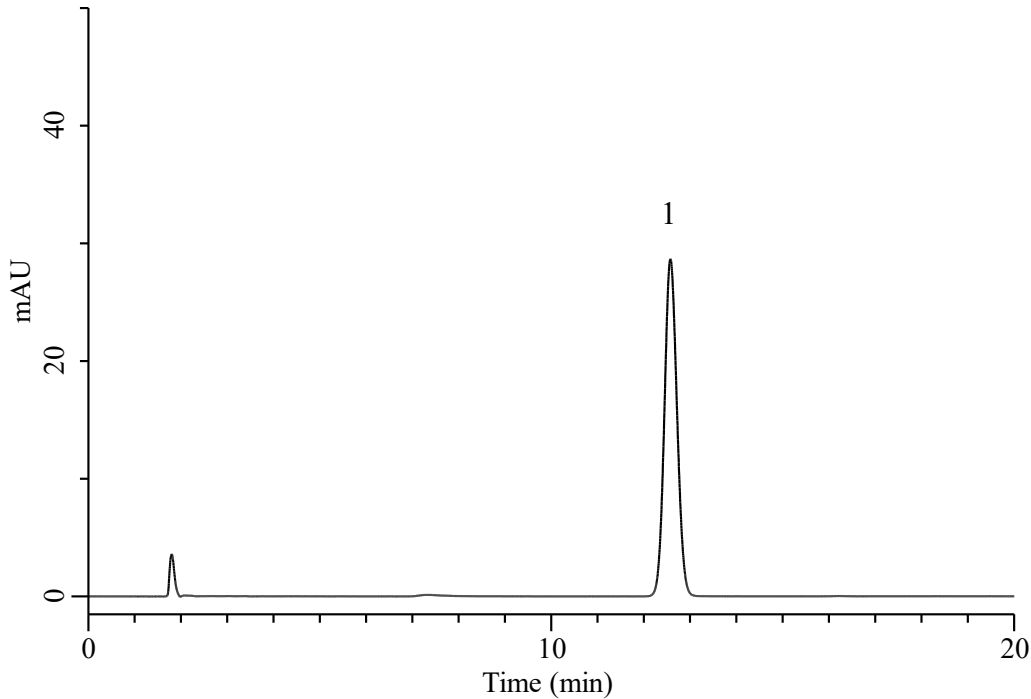


Analysis of Trichloroacetic acid



Conditions

System : Primaide (HITACHI)
Column : InertSustain AQ-C18 (GL Sciences Inc.)
 (5 μ m, 150 x 4.6 mm I.D.)
Column Cat. No. : 5020-89730
Eluent : 100 mM HClO₄ in H₂O
Flow Rate : 1.0 mL/min
Col. Temp. : 40 °C
Detection : UV 210 nm (Primaide 1410 UV)
Injection Vol. : 50 μ L
Sample : Standard in H₂O

Analyte:

1. Trichloroacetic acid 34.57 μ g/mL