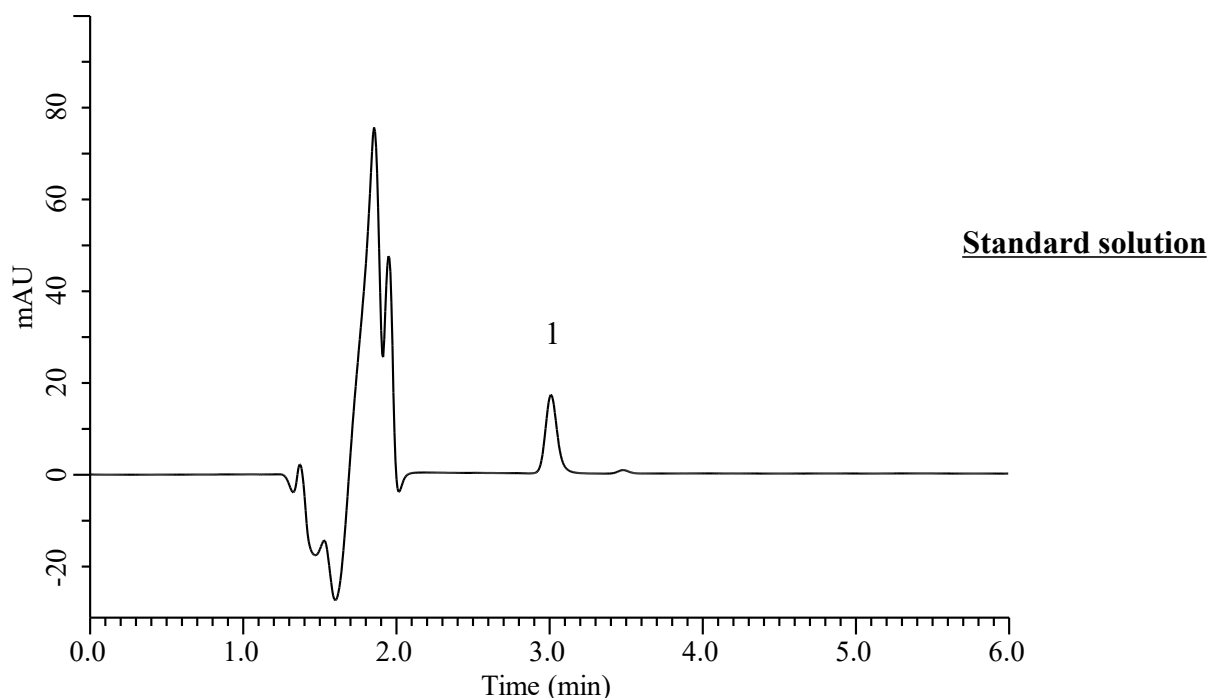


Analysis of Risperidone

(Under the Condition of Japanese Pharmacopoeia 19th, Risperidone Tablets, Dissolution)



Conditions

System : Chromaster PLUS (HITACHI)
Column : InertSustainSwift C18 (GL Sciences Inc.)
 (5 μ m, 150 x 4.6 mm I.D.)
Column Cat. No. : 5020-88026
Eluent : Solution*
Flow Rate : 1.2 mL/min
Col. Temp. : 25 °C
Detection : UV 237 nm (Chromaster 5430 DAD)
Injection Vol. : 100 μ L
Sample : Standard

Analyte:

1. Risperidone 0.56 μ g/mL

 Theoretical plates number : 7618 (\geq 3500)

 Tailing factor : 1.20 (\leq 2.5)

 RSD of
 the peak area (n=6) : 0.08 (\leq 2.0)

* : To 1000 mL of a mixture of water and acetonitrile (13:7) add 1 mL of trifluoroacetic acid, and adjust to pH 3.0 with Ammonia solution (28).