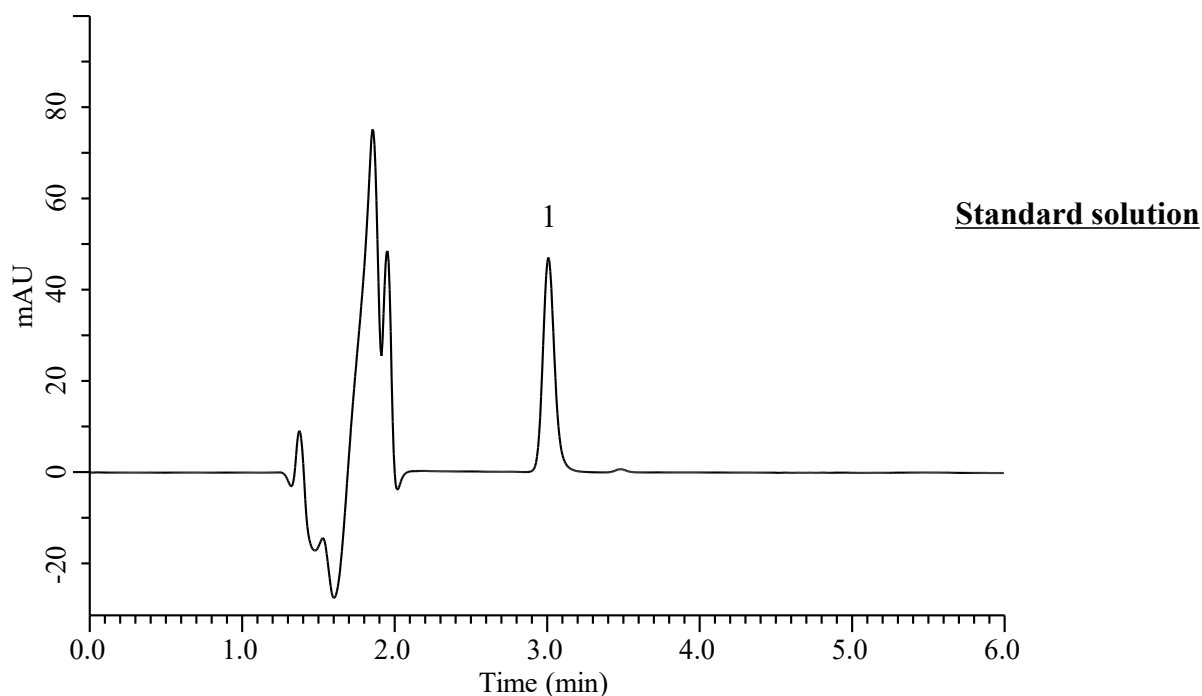


## Analysis of Risperidone

(Under the Condition of Japanese Pharmacopoeia 19th, Risperidone Fine Granules, Dissolution)



### Conditions

**System** : Chromaster PLUS (HITACHI)  
**Column** : InertSustainSwift C18 (GL Sciences Inc.)  
 (5  $\mu$ m, 150 x 4.6 mm I.D.)  
**Column Cat. No.** : 5020-88026  
**Eluent** : Solution\*  
**Flow Rate** : 1.2 mL/min  
**Col. Temp.** : 25  $^{\circ}$ C  
**Detection** : UV 237 nm (Chromaster 5430 DAD)  
**Injection Vol.** : 100  $\mu$ L  
**Sample** : Standard

### **Analyte:**

1. Risperidone      1.68  $\mu$ g/mL  
  
 Theoretical plates number : 7658 ( $\geq$  3500)  
  
 Tailing factor : 1.18 ( $\leq$  2.5)  
  
 RSD of  
 the peak area (n=6) : 0.13 ( $\leq$  2.0)

\* : To 1000 mL of a mixture of water and acetonitrile (13:7) add 1 mL of trifluoroacetic acid, and adjust to pH 3.0 with Ammonia solution (28).