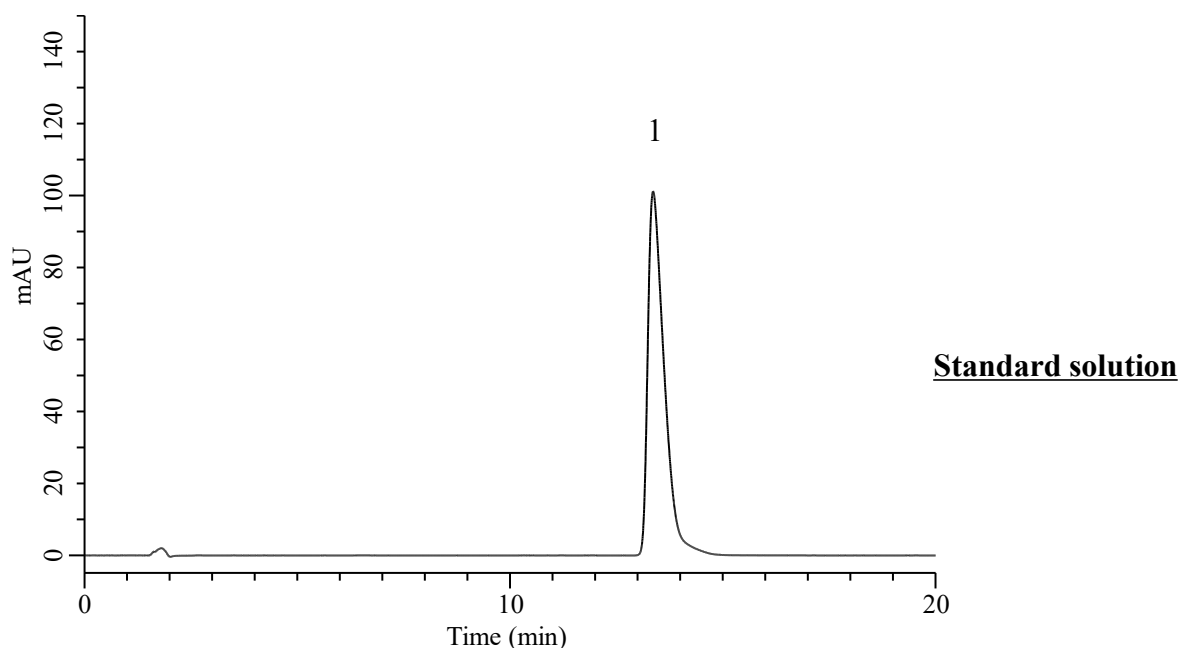


## Analysis of Risperidone

(Under the Condition of Japanese Pharmacopoeia 19th, Risperidone Oral Solution, Assay)



### Conditions

**System** : Chromaster PLUS (HITACHI)  
**Column** : Inertsil WP300 C18 (GL Sciences Inc.)  
 (3.5  $\mu$ m, 150 x 3.0 mm I.D.)  
**Column Cat. No.** : 5020-87034  
**Eluent** : Solution\*  
**Flow Rate** : 0.55 mL/min  
**Col. Temp.** : 25 °C  
**Detection** : UV 275 nm (Chromaster 5420 UV-VIS)  
**Injection Vol.** : 10  $\mu$ L  
**Sample** : Standard

### Analyte:

1. Risperidone      100  $\mu$ g/mL  
  
 Theoretical plates number : 6093 ( $\geq$  4000)  
 Tailing factor : 1.85 ( $\leq$  2.5)  
 RSD of  
 the peak area (n=6) : 0.14 ( $\leq$  1.0)

\*: To 1000 mL of a mixture of water and acetonitrile (4:1) add 1.5 mL of trifluoroacetic acid, and adjust to pH 3.0 with ammonia solution (28).