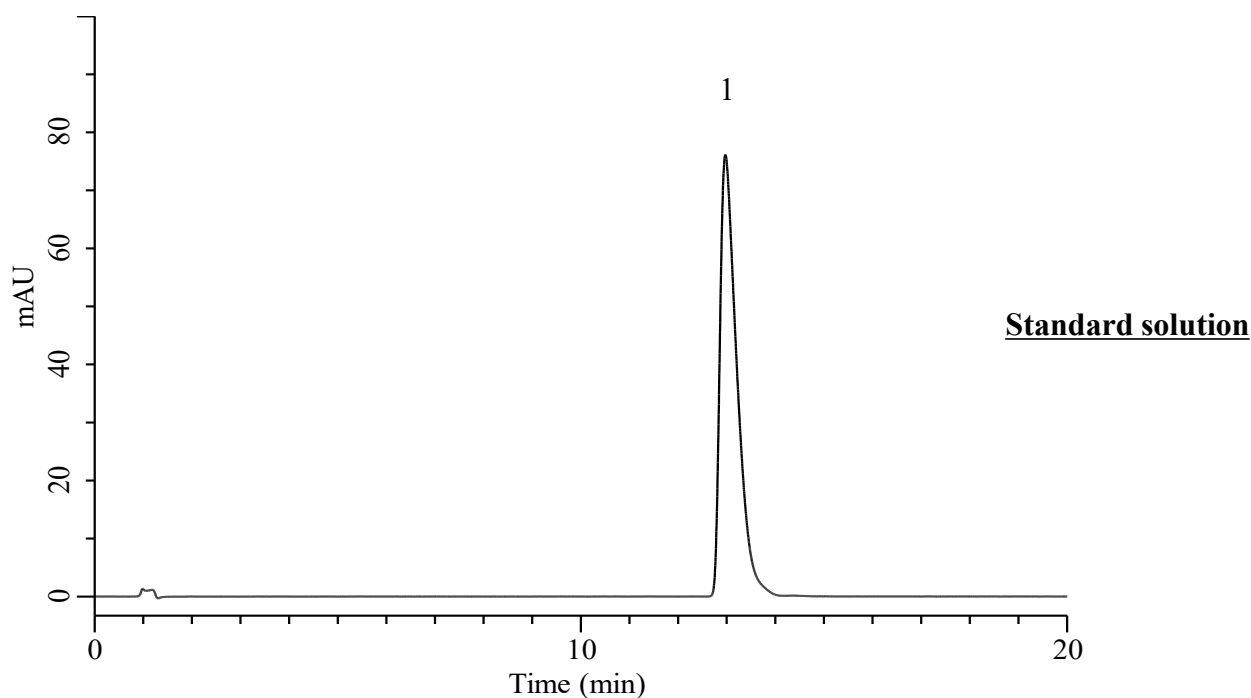


## Analysis of Risperidone

(Under the Condition of Japanese Pharmacopoeia 19th, Risperidone Oral Solution, Assay)



### Conditions

**System** : Chromaster PLUS (HITACHI)  
**Column** : Inertsil Hybrid-C18 (GL Sciences Inc.)  
 (3.5  $\mu\text{m}$ , 150 x 3.0 mm I.D.)  
**Column Cat. No.** : 5020-76036  
**Eluent** : Solution\*  
**Flow Rate** : 0.80 mL/min  
**Col. Temp.** : 25  $^{\circ}\text{C}$   
**Detection** : UV 275 nm (Chromaster 5420 UV-VIS)  
**Injection Vol.** : 10  $\mu\text{L}$   
**Sample** : Standard

### Analyte:

1. Risperidone 100  $\mu\text{g/mL}$   
 Theoretical plates number : 6827 ( $\geq 4000$ )  
 Tailing factor : 1.97 ( $\leq 2.5$ )  
 RSD of  
 the peak area (%) (n=6) : 0.21 ( $\leq 1.0$ )

\*: To 1000 mL of a mixture of water and acetonitrile (4:1) add 1.5 mL of trifluoroacetic acid, and adjust to pH 3.0 with ammonia solution (28).