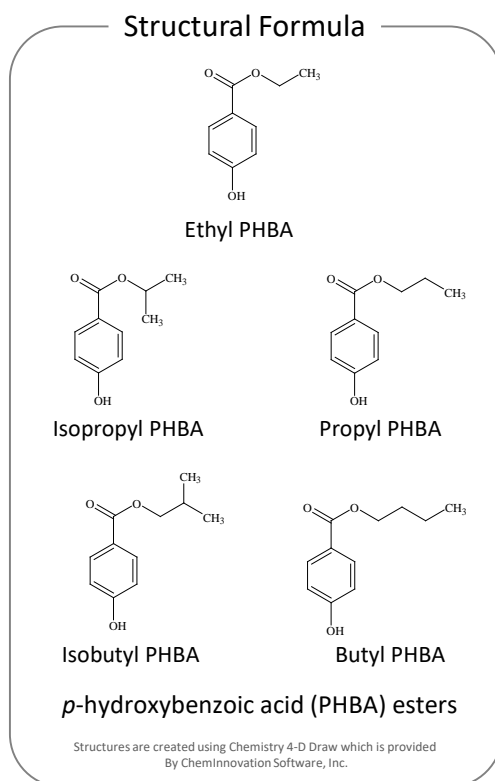
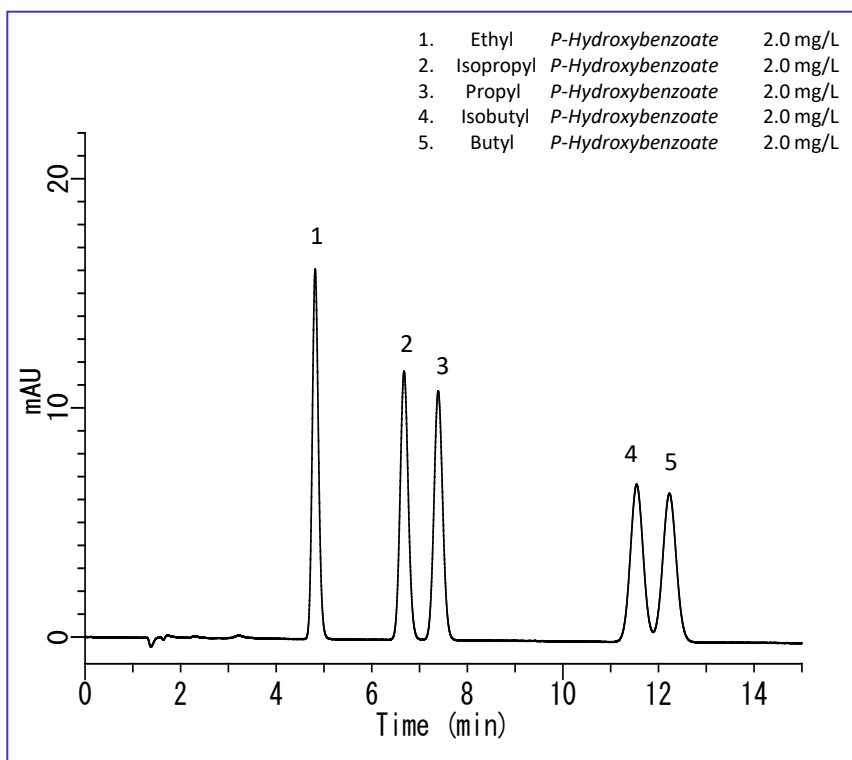


In this application parahydroxybenzoate (parahydroxybenzoate) was analyzed in accordance with the Food Sanitation Inspection Guidelines.

Parahydroxybenzoic acid esters, are more commonly called parabens and are widely used as preservatives in cosmetics and foods. The analysis of these preservatives is presented here.

(K.Suzuki)

Example: Measurement of standards



HPLC conditions

Column : Inertsil ODS-3
(5 μ m, 150 x 4.6 mm I.D.)

Eluent :A) CH₃ OH
B) Citric acid Buffer
A/B = 60/40, v/v
(Mixed by a gradient mixer)

Flow rate : 1.0 mL/min

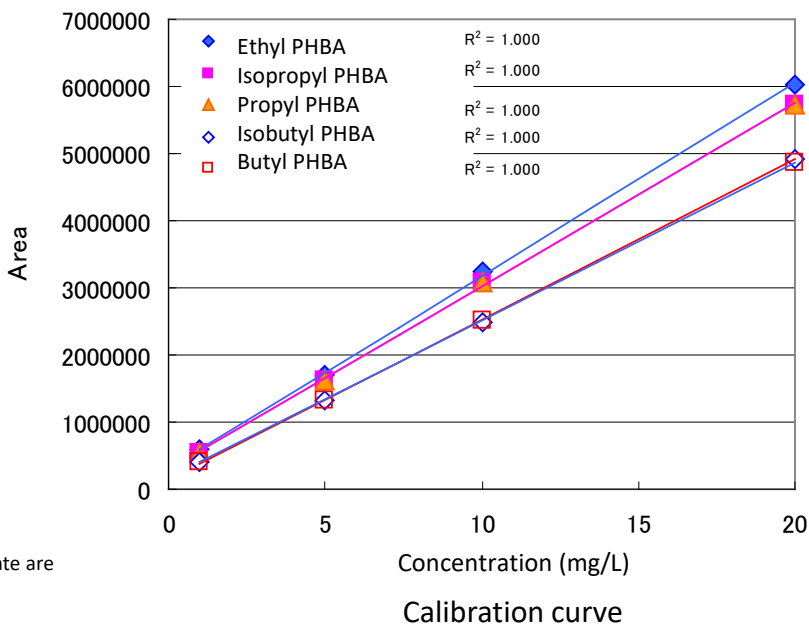
Column temperature : 40 °C

Detected : UV 270 nm

Injection volume : 20 μ L

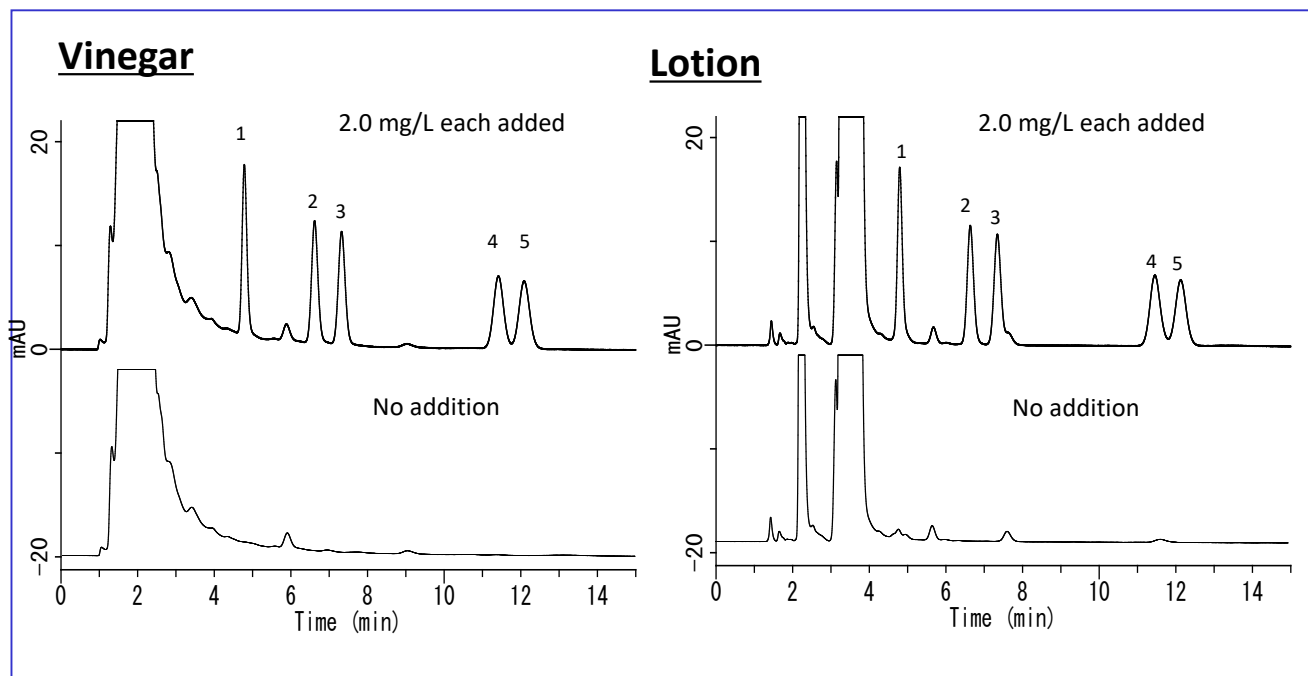
Citric acid Buffer:

0.6 g of 3 sodium citrate-2-hydrate and 0.7 g of citric acid-1-hydrate are dissolved in 1 L of ultrapure water



Example of analysis

For pretreatment, steam distillation is described in the test method. In this test, samples were diluted and filtered through a 0.45 μm filter.



GL Sciences disclaims any and all responsibility for any injury or damage which may be caused by this data directly or indirectly. We reserve the right to amend this information or data at any time and without any prior announcement.

GL Sciences, Inc. Japan

22-1 Nishishinjuku 6-Chome
Shinjuku-ku, Tokyo,
163-1130, Japan
Phone: +81-3-5323-6620
Fax: +81-3-5323-6621
Email: world@glsc.co.jp
Web: www.glsciences.com

GL Sciences B.V.

De Sleutel 9
5652 AS Eindhoven
The Netherlands
Phone: +31 (0)40 254 95 31
Email: info@glsciences.eu
Web: www.glsciences.eu

GL Sciences (ShangHai) Ltd.

Tower B, Room 2003,
Far East International Plaza,
NO,317 Xianxia Road,
Changning District.
Shanghai, China P.C. 200032
Phone: +86 (0)21-6278-2272
Email: contact@glsciences.com.cn
Web: www.glsciences.com.cn

GL Sciences, Inc. USA

4733 Torrance Blvd. Suite 255
Torrance, CA 90503
Phone: 310-265-4424
Fax: 310-265-4425
Email: info@glsciencesinc.com
Web: www.glsciencesinc.com

International Distributors

Visit our Website at www.glsciences.com/distributors