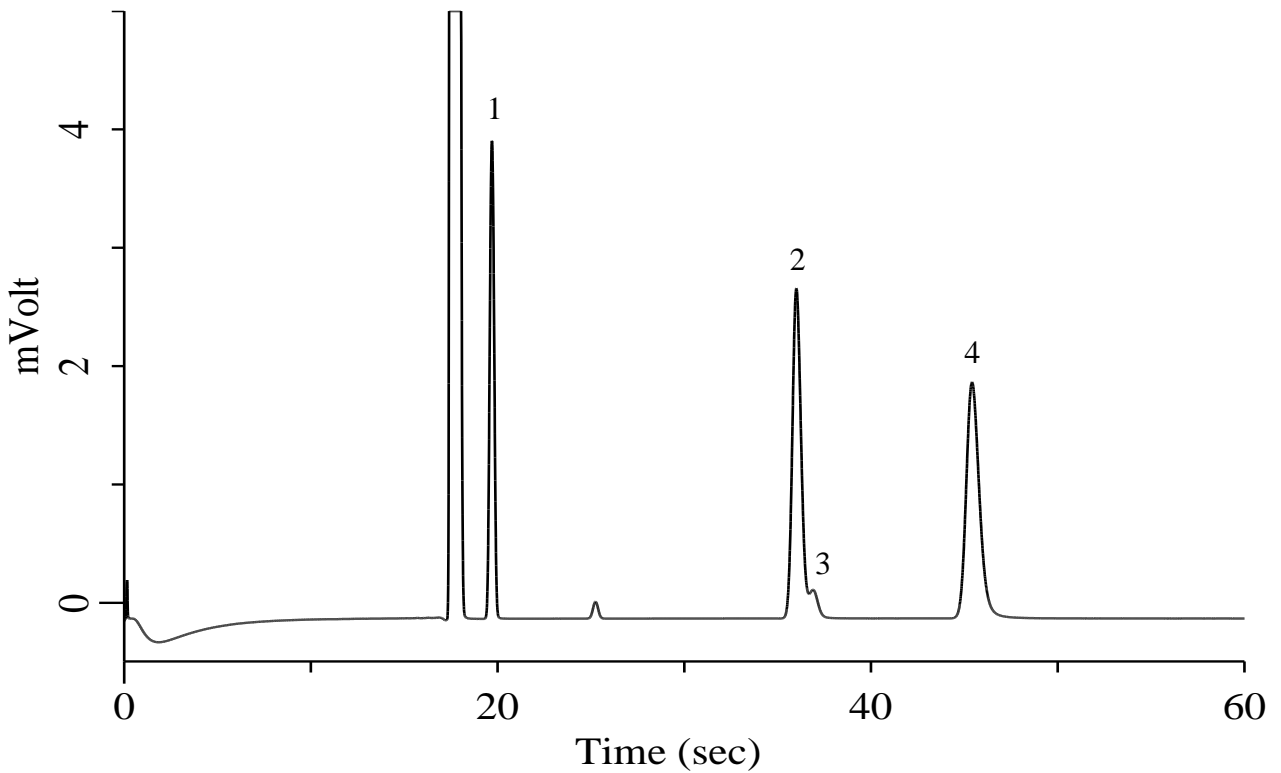


## Hydrocarbons C1-C2

### Specification

One GC Channel



### Conditions

**System** : Micro GC  
**Column** : PoraPLOT Q 10 m  
**Column Temp.** : 40 °C  
**Carrier Gas** : He 200 kPa  
**Inject Time** : 40 msec

### Analyte:

1. Methane (CH <sub>4</sub> )	1000 ppm (v/v)
2. Ethylene (C <sub>2</sub> H <sub>4</sub> )	1000 ppm (v/v)
3. Acetylene (C <sub>2</sub> H <sub>2</sub> )	100 ppm (v/v)
4. Ethane (C <sub>2</sub> H <sub>6</sub> )	1000 ppm (v/v)

Balance Gas He