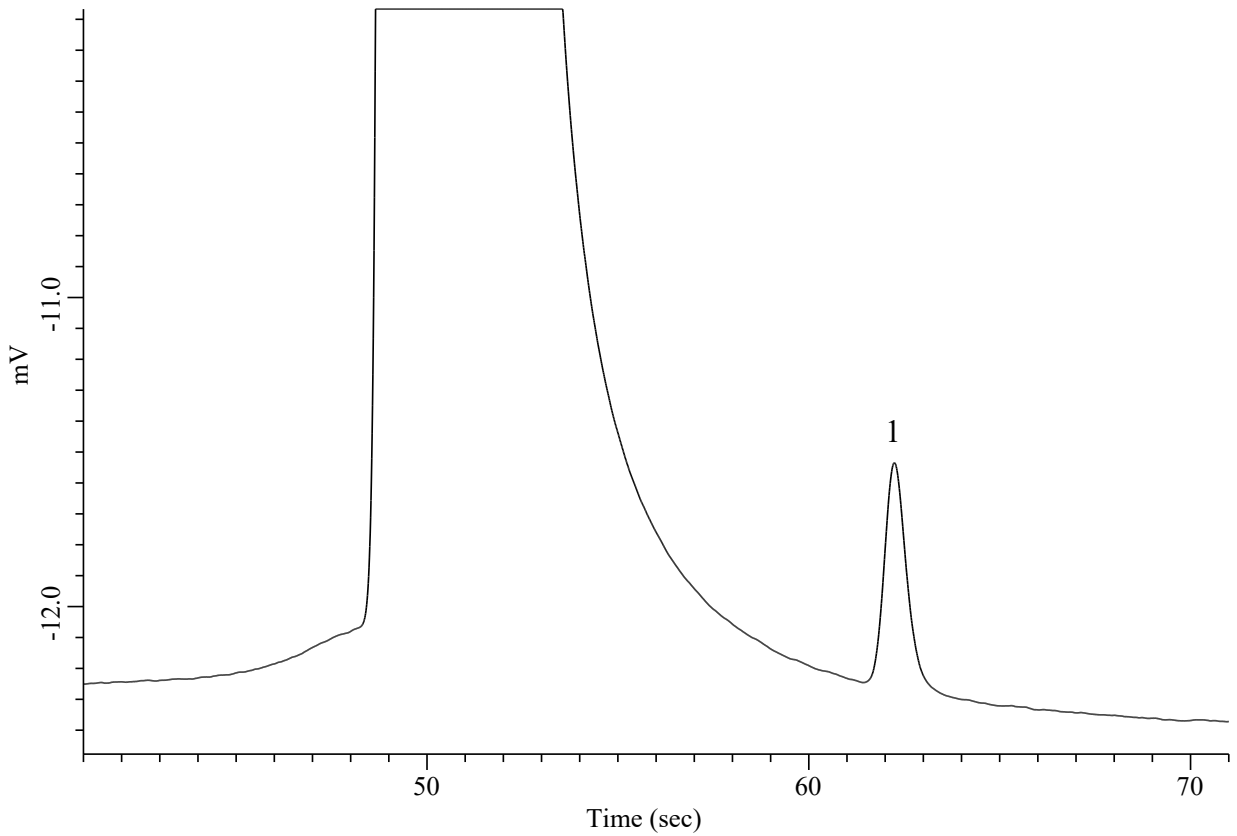


## Analysis of O<sub>2</sub> in high concentration H<sub>2</sub>

**Specification**

One GC Channel



**Conditions**

System : Micro GC  
 Column : Molsieve 5A 10 m  
 Column Temp. : 80 °C  
 Carrier Gas : Ar 170 kPa  
 Inject Time : 40 msec

**Analyte:**

1. Oxygen 1000 ppm (v/v)  
 Balance Gas H<sub>2</sub>