

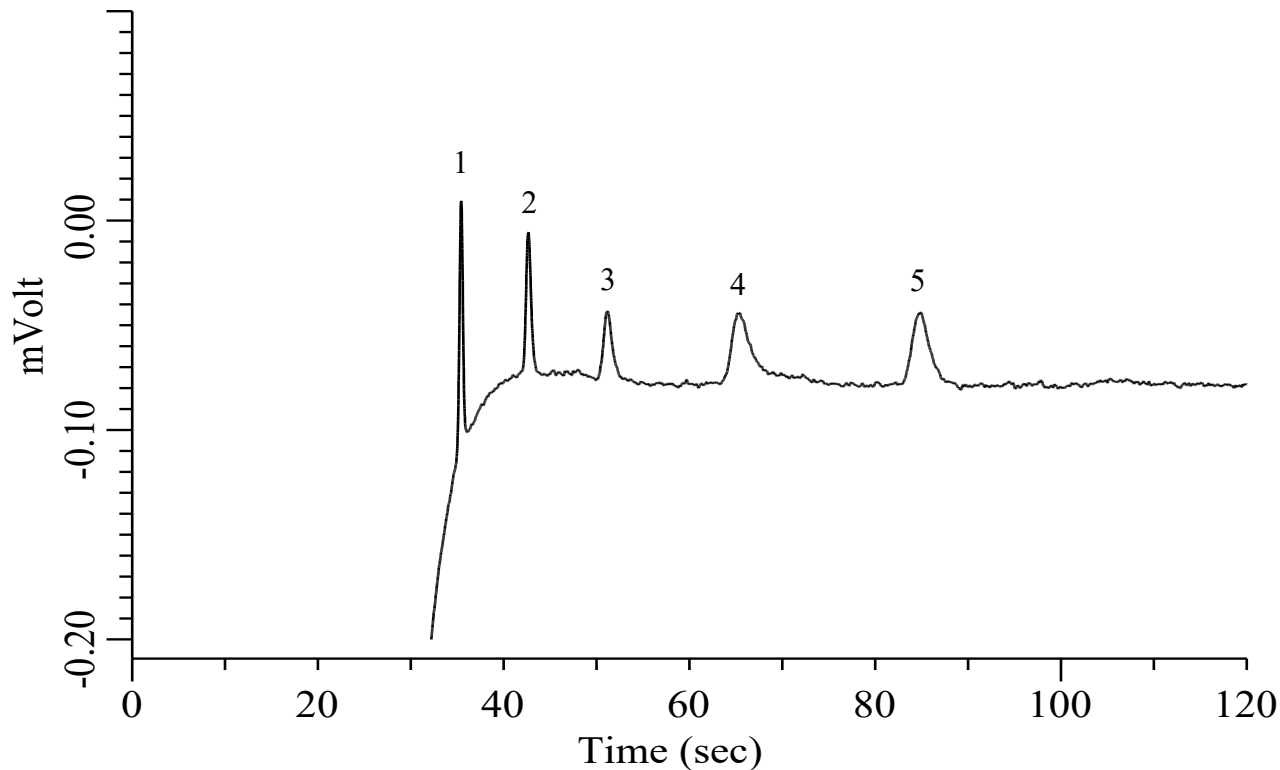
## Analysis of Inorganic gases (H<sub>2</sub>, O<sub>2</sub>, N<sub>2</sub>, Methane, CO)

**Specification**

One GC Channel

► **Option**

Backflush (BF)



**Conditions**

System : Micro GC  
 Column : Molsieve 5A 10 m + BF 3 m  
 BF Time : 16.9 sec  
 Column Temp. : 100 °C  
 Carrier Gas : Ar 170 kPa  
 Inject Time : 40 msec

**Analyte:**

1. Hydrogen (H <sub>2</sub> )	25 ppm (v/v)
2. Oxygen (O <sub>2</sub> )	200 ppm (v/v)
3. Nitrogen (N <sub>2</sub> )	200 ppm (v/v)
4. Methane (CH <sub>4</sub> )	200 ppm (v/v)
5. Carbon monoxide (CO)	500 ppm (v/v)

Balance Gas Ar