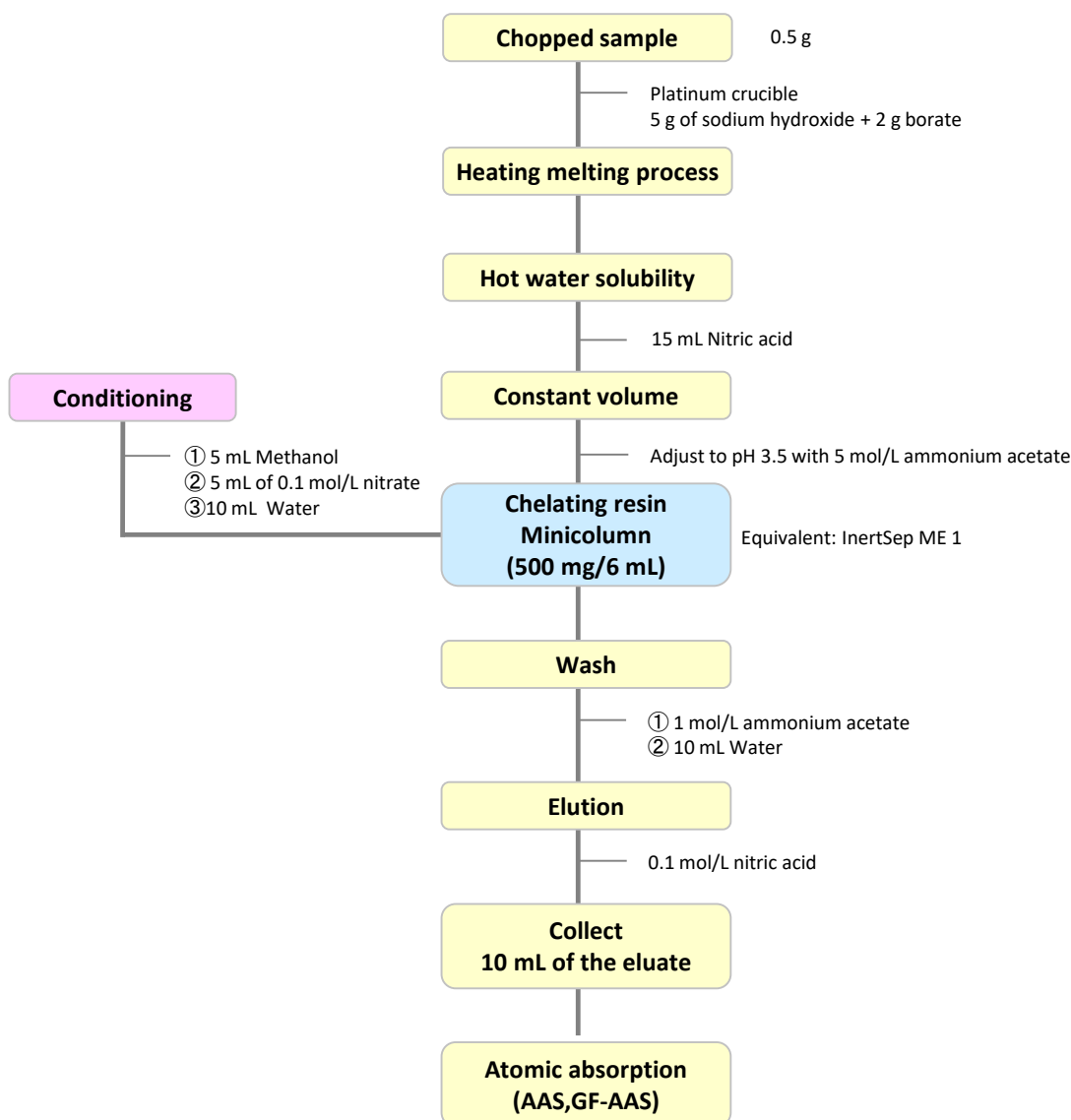


Measurement of heavy metals in rubber containers and packaging (silicone rubber)

The Ordinance for the partial revision of the Enforcement Regulations of the Food Sanitation Law (MHLW Ordinance No. 163, 2012) and the revision of the standards for food and additives (MHLW Notification No. 595, 2012) were promulgated, along with the revision of the Enforcement Regulations of the Food Sanitation Law and the standards for food and additives.

In the partial revision, an alkali melting method was applied to the testing of cadmium and lead in rubber equipment or containers and packaging. In addition, it also refer to cadmium and lead test methods for rubber milk feeding equipment to which this test method is applied.

Flow diagram of solid phase pretreatment

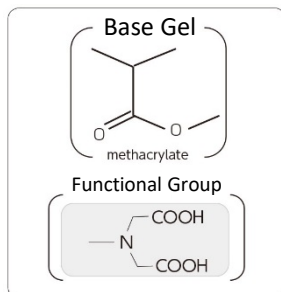


Reference: MHLW Notice No. 595

From the Study on the Safety of Food Instruments, Containers and Packaging and Toys for Infants and Children (2014)

2. Products for solid-phase extraction

[InertSep ME-1]



Mean particle size : 70 μm
 Surface Area : 80 m^2/g
 Pore volume : 0.5 mL/g
 Pore size : 210 \AA
 Ion exchange capacity : Cu^{2+} 0.3 mmol/g
 PH range of use : 1 – 14
 Remarks : H⁺ ion pair

InertSep ME 1 is a solid phase that incorporates an iminodiacetic acid-type weak cation-exchange group attached to methacrylate polymer. It is suitable for selectively concentrating more than divalent metal cations, because it is highly hydrophilic and does not retain monovalent Na and K ions. It is also suitable for custom-made Ni affinity plates for protein purification.

Syringe barrel type cartridge

Product name	Column size	Quantity	Cat.No.
InertSep ME-1 <small>Recommended for this application</small>	250 mg/6 mL	30 bottles	5010-27401
	500 mg/6 mL	30 bottles	5010-27402
	1 g/20 mL	20 bottles	5010-27406

Large size cartridge LSC

Product name	Column size	Quantity	Cat.No.
InertSep LSC ME-1 <small>Recommended for this application</small>	200 mg	50 bottles	5010-27673
	500 mg	50 bottles	5010-27674

[Accessories for Solid-Phase Extraction Cartridge Connections]



Cartridge connection adapter

Cartridge adapter used to connect syringe barrel cartridges and LSC cartridges.

Product name	Specification	Qty.	Cat.No.
Solid-phase extraction cartridge Connecting adapter (PP) <small>Recommended for this application</small>	For 1,3,6 mL reservoirs	12	5010-60000
	For 12,20 mL reservoirs	12	5010-60001
	For 60 mL reservoirs	12	5010-60002

Empty reservoir

Used when the sample volume is greater than the cartridge capacity.



Product name	Specification	Qty.	Cat.No.
Empty reservoir (PP) No frits <small>Recommended for this application</small>	1 mL	50 bottles	5010-60100
	3 mL	50 bottles	5010-60101
	6 mL	30 bottles	5010-60102
	12 mL	20 bottles	5010-60103
	20 mL	20 bottles	5010-60104
	60 mL	10 bottles	5010-60105
	150 mL	10 bottles	5010-60106

GL Sciences disclaims any and all responsibility for any injury or damage which may be caused by this data directly or indirectly. We reserve the right to amend this information or data at any time and without any prior announcement.

GL Sciences, Inc. Japan

22-1 Nishishinjuku 6-Chome
 Shinjuku-ku, Tokyo,
 163-1130, Japan
 Phone: +81-3-5323-6620
 Fax: +81-3-5323-6621
 Email: world@glsc.com
 Web: www.glsciences.com

GL Sciences B.V.

De Sleutel 9
 5652 AS Eindhoven
 The Netherlands
 Phone: +31 (0)40 254 95 31
 Email: info@glsciences.eu
 Web: www.glsciences.eu

GL Sciences (ShangHai) Ltd.

Tower B, Room 2003,
 Far East International Plaza,
 NO,317 Xianxia Road,
 Changning District.
 Shanghai, China P.C. 200032
 Phone: +86 (0)21-6278-2272
 Email: contact@glsciences.com.cn
 Web: www.glsciences.com.cn

GL Sciences, Inc. USA

4733 Torrance Blvd. Suite 255
 Torrance, CA 90503
 Phone: 310-265-4424
 Fax: 310-265-4425
 Email: info@glsciencesinc.com
 Web: www.glsciencesinc.com

International Distributors

Visit our Website at www.glsciences.com/distributors